



WOODLEA
PRIMARY SCHOOL

Issue 8

7th November 2025

Dates for the Diary

- November -

- Parent evening early 10.11.25
- Parent evening late 12.11.25
- 2026 Intake Open morning 13.11.25
- Coffee afternoon 17.11.25
- PTA Autumn event 17.11.25
- Times table workshop 18.11.25
- Flu Vaccinations 20.11.25
- Maths workshop 24.11.25
- 2026 Intake Open morning 27.11.25
- Own clothes day 28.11.25

- December -

- Writing Workshop – 01.12.25
- Own Clothes day 05.12.25
- School Fair 06.12.25
- KS1 nativity 09.12.25
- KS1 Nativity 10.12.25
- Lambs Carol Concert 12.12.25
- Infant Xmas party 15.12.25
- Rock Steady Concert 16.12.25
- Junior Carol Concert 16.12.25
- Christmas Lunch 17.12.25
- Woodlea's Got Talent 17.12.25
- Junior Carol Concert 17.12.25
- Junior Xmas party 18.12.25
- Last day of term (early finish) 19.12.25

Please note more details regarding Christmas events will be sent after half term.

Please note that all upcoming events are also on the

Woodlea School Website

MENU

Week 2 Autumn./Spring Menu 25

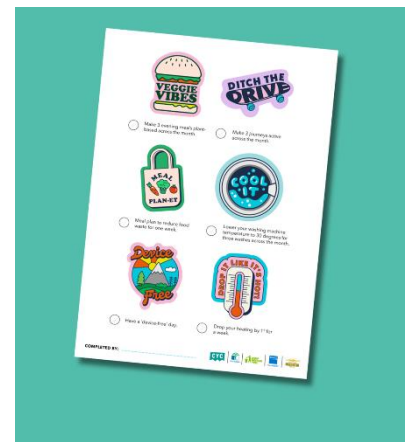
The menus are available on Woodlea School Website

Woodlea Word

"We often talk of saving the planet, but the truth is that we must do these things to save ourselves." David Attenborough

Being Caring: You will have received in email on Monday which outlines how you can support **Eco Schools and the Woodlea Eco Council** with their work on promoting **"Cut your Carbon"** month. We want to reduce the amount of Carbon we create as a Woodlea Community. This November, we challenge **YOU** to complete 6 fun activities with your family and friends to Cut Your Carbon!

At the end of the month, we'll count up how many of you joined in, add up the estimated carbon saved, and celebrate your amazing efforts!



Eco Council: Introducing Eco Council Members 2025

Our Eco Council members this year are: Year 6: Kingsley (Eco Council Chair); Year 5: Olivia S. and Harry R; Year 4: Sophia K & Austin K; Year 3: Xander G & Lyla S; Year 2: Fitz P, Isla D & Rae K.

We are taking part in **Switch off Fortnight: 10th to 21st November: Eco Council members** will be recording our electricity and gas use before and after Switch off Fortnight to see if we can reduce our use and therefore not only cut costs, but cut our carbon emissions as a school. During the fortnight, they will be working with teachers to turn off lights, computers etc. when not in use. Maybe you would like to join in at home. Just take a meter reading this week and then again over the next two weeks and a final reading on 24th November to compare. Small changes can have an impact if we all work together.

Head Teacher's Awards

Congratulations to the following children:

Lambs – Hugo W, Year 1 – Ellis H, Year 2 – Zack M, Year 3 – Grace B, Year 4 – Faith G, Year 5 – Brook D, & Year 6 – Ellie K



WOODLEA
PRIMARY SCHOOL

Weekly Attendance

Lambs: 97.9% Y2 : 92.6%

Y3: 95% Y4 : 98%

Y5: 95.7% Y6: 96.3%

Winners

Y1: 98.8%

Please remember school attendance is mandatory.

Holidays should be planned for school holiday times to avoid missing school time.

If your child is absent, you must notify the school office every day before 9:10am at the latest.

Universal Credit

Did you know that the school receives extra funding for every child that is entitled to universal credit?

If you are entitled to universal credit, please do make sure that you come and make us aware in the school office. This means that

School Uniform Link

[MyClothing](#)

Communications

Y3 – Y6 – Cross Country

Y4 – Change of PE Day

Y3 – Change of PE Day

All - Cut your Carbon

All- Reminder Flu Vaccination

All - Reminder Online

workshop

All – Christmas Newsletter

All – Poppy Appeal

Y4 – Saxon Day

Y1 – Y6 – Autumn Term 2

Clubs

Y5 – Spellings

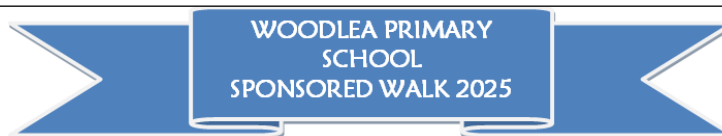
All – Happy School Bags

Collection

Lambs – PE Days

Year 4 – Saxon Day

We really enjoyed our Anglo-Saxon day! We learned some of their language, tried solving their riddles, and even played an Anglo-Saxon board game, which was similar to draughts. We also got to try on Anglo-Saxon clothes — they were really heavy because they were made from wool! The best part was holding some of their weapons and taking part in a reenactment of the Battle of Hastings. It was so exciting to feel what life might have been like back then.



Thank you for all those who have made donations so far. We have raised an amazing total of £1674. There is still time to collect and pay in sponsorship money. Please pay this in to Arbor by Monday 10th November. On Arbor go to Payments/ School Fund and Top up. Please use the reference Sponsored Walk.

Autumn Art Competition

We have decided to extend the Autumn Art Competition date deadline based on parents feedback. For those of us who have had a hectic half term, we realise it is difficult to fit everything in. We have had some wonderful entries so far and our talented and creative pupils have produced some unique work. Thank you parents for supporting . Last date for entry is Monday 10th November . Please leave art in the plastic box in the back porch. We will display it in the main foyer for all the pupils to see. Mrs Gambier and her team will judge next week. There is a three pounds entry fee you can hand into the office or alternatively pay on line.

PTA WOODLEA PRIMARY SCHOOL

Art COMPETITION
THEME: AUTUMN

CLOSING DATE: 4TH NOV

ENTRY FEE: £3

FORMAT: ANY

1ST, 2ND & 3RD PRIZES!

A painting, drawing, digital or multi-textured A4 picture based around the theme of *Autumn*

The theme 'Autumn' will be open to interpretation this year. Whether it's Harvest, wildlife, nature, fireworks or Halloween, we welcome all entries from the children.

£3 to enter. Fill in the form and pay into the PTA account or pop in to reception with cash.

Fabulous prizes to be won

Hedges near the Scooter Shed and Paddock area

A polite reminder that children should not be playing in the hedges near the scooter shed or paddock areas before or after school. Children should walk down the main path in to and out of school. If they have a bike or scooter to put away, they should do this and then return back to the path and walk into school. Thank you for your co-operation with this.



WOODLEA
PRIMARY SCHOOL

Amazon Wish
Lists

[Year 6](#)

[Year 5](#)

[Year 4](#)

[Year 3](#)

[Year 2](#)

[Year 1](#)

[Lambs](#)

[Outdoor Learning](#)

Guided Reading Books



We are missing a large number of guided reading books from our newly purchased sets.

Please can we ask parents to check at home for any schoolbooks as these sets are now unusable for other children within the school.

TENNIS CLUBS AT WOLDINGHAM TENNIS CLUB - AUTUMN TERM 2025

Dear Parents / Guardian,

This Autumn term we are offering tennis coaching clubs for Woodlea pupils at Woldingham Tennis Club

Year 1 and 2 will be on Tuesdays at 3.30pm to 4.30pm

Year 3 + above will be on Fridays at 3.30pm to 4.30pm

Rackets are provided and we offer a FREE taster lesson to try the class out

Below is a link to the tennis club

<https://clubspark.lta.org.uk/WoldinghamLTC>



For further details to be sent to you or to reserve a taster place for your child please email or WhatsApp Patrick Gorman (head coach) on: patrickgorman-@outlook.com or 07985 797541

Christmas Card Competition from Claire Coutinho | Member of Parliament for East Surrey

As we approach the festive season, I am delighted to invite you to take part in my eagerly anticipated annual Christmas Card competition for primary school children in East Surrey.

The winning design will be sent to many MPs, local residents, local businesses, and even His Majesty the King!

Design Guideline: Entries should be on A4. I encourage the designers to use any medium they would like, the more the merrier I say!

Submission Deadline: 14/11/25.

Prize: Every year, I welcome the winning artist to Parliament for tea and biscuits.

Please send all entries by post to Claire Coutinho, 6 Godstone Road, Lingfield, Surrey, RH7 6BW or as an email attachment

to claire.coutinho.mp@parliament.uk

Please do not hesitate to contact my office at claire.coutinho.mp@parliament.uk with any questions.





WOODLEA
PRIMARY SCHOOL

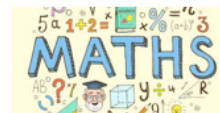
WOODLEA WORKSHOPS

Times Tables - Y3/4 parents
Tuesday 18th November 2025
Timings 2:30 - 3:00



Come along to our times tables workshop to see how we teach and practise times tables at school. We'll show you how we use TT Rockstars to build speed and confidence, and share practical tips for how you can support your child's learning at home. This interactive session is a great opportunity to see the strategies in action and ask any questions you might have.

Greater Depth Maths in KS2 - Years 3 - 6
Monday 24th November
Timings 2:30 - 3:00



Join us for a practical session exploring what "greater depth" in maths really means. We'll look at the expectations for children working at this level, share example questions to show the type of reasoning and problem-solving involved, and discuss how we support pupils to reach this standard in school. We'll also offer ideas for how you can help develop these skills at home.

Greater Depth Writing in KS2 - Years 3 - 6
Monday 1st December
Timings 2:15 - 3:00



Ever wondered what makes a piece of writing truly "greater depth"? In this session, we'll explore the expectations for children working at this level and share examples of exceptional writing. We'll also clear up common misconceptions — like the idea that greater depth simply means 'writing more'. Parents will see the kinds of skills we look for, including creativity, precision, and control of language, and leave with practical tips to help develop these skills at home.

Woodlea Primary School

**THANK YOU FOR
YOUR SUPPORT THIS
HARVEST!**

from



We appreciate each and every harvest donation, all of which helps us to support local people in need

Thank you!

Caterham & District Foodbank provides emergency food and support for local people in crisis across the northern half of Tandridge District. People are referred to us by professionals already helping them in their situation, and we rely on the generosity of the local community for food and funding donations to make that possible. As part of the Trussell network of foodbanks, we want to end the need for foodbanks in the UK

Registered charity : 1155330 www.caterham.foodbank.org.uk