



**WOODLEA**  
PRIMARY SCHOOL

**Issue 4**

26<sup>th</sup> September 2025

**Dates for the Diary**

- **September** -
- Phonics Workshop 6pm Year R & 1 - 30.09.25
- **October** -
- Yr1 – Ranger Stu 02.10.25**
- 2026 Intake Open Morning 02.10.25**
- PTA AGM 02.10.25**
- Yr5 – Thames Barrier 06.10.25
- Y6 – Greek Day 6.10.25**
- Yr 6 – Junior Citizen 07.10.25**
- Yr3 – Butser Farm 09.10.25**
- 2026 Intake Open morning 09.10.25
- Y6 Class Assembly 10.10.25**
- Sponsored Walk 13.10.25**
- Harvest Festival Assembly 17.10.25**
- Half Term 20.10.25 – 31.10.25
- **November** -
- Online Safety Workshop 04.11.25**
- 2026 Intake Open morning 06.11.25
- 2026 Intake Open morning 13.11.25
- Times table workshop 18.11.25**
- Flu Vaccinations 20.11.25
- 2026 Intake Open morning 27.11.25

**Please note that all upcoming events are also on the Woodlea School Website**

**MENU**

*Week 3 Spring/Summer Menu 25*  
The menus are available on [Woodlea School Website](#)

**FLYERS**

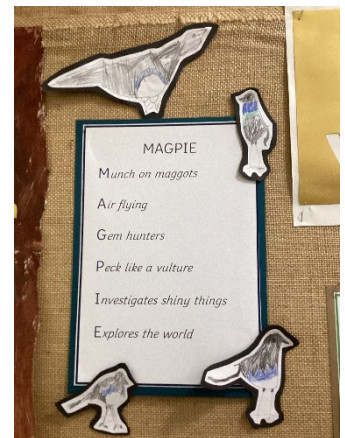
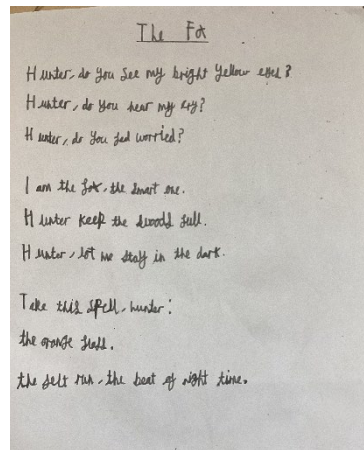
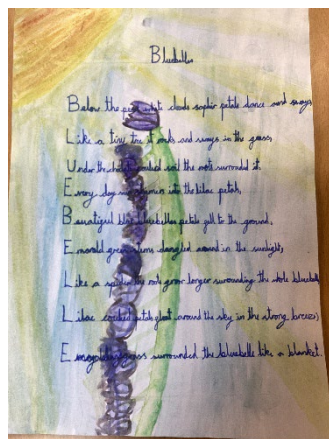
Maths Newsletter  
Old Cats Rugby Club promotion-girls rugby KS2.

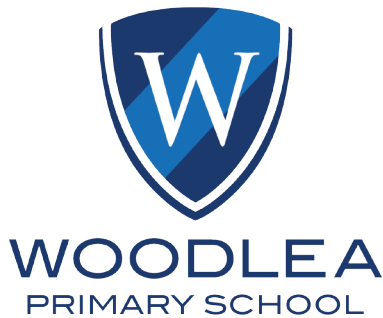
# Woodlea Word

**“The future belongs to those who believe in the beauty of their dreams” Eleanor Roosevelt**

**Be Aspirational:** Our assembly on Monday continued the theme of discussing aspirations. I asked the children to share how they had been aspirational over the last week or the weekend. We then explored how the children go about achieving a goal and one of the things we discussed was how we often learn by watching or listening to how other people do things. Research has shown that human babies are unique among animals as they learn mainly by copying or mimicking. In school, the teachers do lots of modelling to capitalise on this learning style and incorporate models of writing, art or research in different subjects to inspire.

**Sharing Poetry:** Last week the children shared their poetry which had been inspired by a poetry book called *“The Lost Spells”*. The children spent several lessons exploring some of the poems in the book, which are about descriptions of nature. They then created poems, either class or individual ones, mimicking the structure or themes of the poems in the book. Many classes also explored the wonderful illustrations and created illustrations themselves in a similar style. It was lovely to read and hear the children's work. We will share more in the Trust Wide Newsletter at the end of term.





### Weekly Attendance

Lambs: 97.4% Y2:98.8%

Y3:98.9% Y4:97.7%

Y5:95% Y6: 95.9%

### Winners

Y1:100%

Please remember school attendance is mandatory. Holidays should be planned for school holiday times to avoid missing school time.

**If your child is absent, you must notify the school office every day before 9:10am at the latest.**

### Universal Credit

Did you know that the school receives extra funding for every child that is entitled to universal credit?

If you are entitled to universal credit, please do make sure that you come and make us aware in the school office. This means that we can access more funding for the school and for your child.

### Amazon Wish Lists

Year 6

Year 5

Year 4

Year 3

Year 2

Year 1

Lambs

### Head Teacher's Awards

Congratulations to the following children:

Year 1 – Otilie M. , Year 2 - Floss , Year 4 – Annabelle , Year 5 – Alice C , Year 6 – Oliver H; Year 3 – A special week where a group have been chosen: Charlotte, Beau, Karim, Jacob, Jesse, Zarah, Silvia, Amelia, Remy, Alba, Vienna and Cecily

Support 1<sup>st</sup> Woldingham Scouts'  
**CAR WASH & POP-UP CAFÉ!**  
**Saturday 27 September 2025**



10am – 12.30pm  
Woldingham Village Hall  
£10 per car (external only)  
CASH ONLY

Hot breakfast butties, drinks and cakes



\*\*Kindly sponsored by Christian Cars\*\*



### RECEPTION PARENTS

#### JUNK MODELLING APPEAL.

Mrs Varndell would be very grateful for donations of materials which the children can use for Junk Modelling – old cereal boxes, fruit containers, scrap material etc. She promises that the materials will be returned - just in a whole different guise!



### IMPORTANT DATES:

#### Year 6 Secondary School Entry - September 2025:

If your child is in year 6 you will need to apply for a secondary school place by **Friday 31<sup>st</sup> October 2025**.

#### Reception Place School Entry – September 2025:

If your child was born between 1 September 2021 and 31 August 2022 you will need to apply for a school place. You can apply between **3<sup>rd</sup> November 2025 and 15th January 2026**.

If you live in Surrey, you can find out all you need to know about school admissions and apply online at [www.surreycc.gov.uk/admissions](http://www.surreycc.gov.uk/admissions) or you can call them on 0300 200 1004



WOODLEA  
PRIMARY SCHOOL

School Uniform Link  
[MyClothing](#)

### Harvest Festival:

The Harvest Festival assembly will be on Friday 17<sup>th</sup> October. We will be supporting the Caterham Food Bank again this year. Please see the wish list.



### SHOPPING LIST MOST NEEDED

Tinned meat  
Tinned or packet soup  
Cereals  
Tinned pulses  
Long life fruit juice  
Tea bags (40 or 80)  
Small coffee jars (100g)  
Soap or deodorant  
Shower gel or shampoo

### Harvest Festival Menu – Thursday 2<sup>nd</sup> October 2025

Please note this will replace the normal menu (week 2) on Thursday 2<sup>nd</sup> October which is currently Creamy Chicken and Rice and Vegetable Burrito. The jacket potato options will remain.

Please ensure that if you wish to change your child's meal because of the menu change on the Thursday 2<sup>nd</sup> October that you update Arbor accordingly.

### Editing choices

**To edit a meal choice that has already been made, you must first remove the current meal choice.** If you do not do this first, you see a red warning message alerting you that you cannot add a meal choice for [the date], because one already exists. Please remove the existing meal choice first" when you try to change the meal choice.

To remove a meal choice:

- Click on the day you want to change to open the edit screen.
- Update the meal choice to **No Choice Selected** using the dropdown
- Click the green **Process** button to delete the choice

This reverts the day to **No choices selected**.





**WOODLEA**  
PRIMARY SCHOOL

**This weeks Flyers:**

Maths Newsletter

Old Cats Rugby Club  
promotion.

# WOODLEA WORKSHOPS

**Online Safety Workshop (aimed at KS2 but anyone who maybe interested are welcome to attend)**

**Tuesday 4<sup>th</sup> November 2025**

**Timings 1:50 - 3:00 and 5:50 - 7:00**



**ONLINE SAFETY**  
Parents  
workshop

Join us for an engaging and informative online safety workshop designed to help you navigate the ever-changing digital world. Together, we'll explore the latest trends in online behaviour, share practical tips to keep children safe, and discuss potential future challenges — including the rise of AI and other emerging technologies. This interactive session combines a video presentation with opportunities for discussion and reflection, giving you the tools and confidence to support your child's online wellbeing.

**Times Tables - Y3/4 parents**

**Tuesday 18<sup>th</sup> November 2025**

**Timings 2:30 - 3:00**

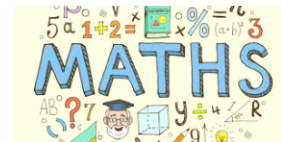


Come along to our times tables workshop to see how we teach and practise times tables at school. We'll show you how we use TT Rockstars to build speed and confidence, and share practical tips for how you can support your child's learning at home. This interactive session is a great opportunity to see the strategies in action and ask any questions you might have.

**Greater Depth Maths in KS2 - Years 3 - 6**

**Monday 24<sup>th</sup> November**

**Timings 2:30 - 3:00**

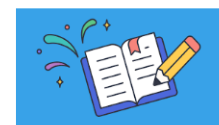


Join us for a practical session exploring what "greater depth" in maths really means. We'll look at the expectations for children working at this level, share example questions to show the type of reasoning and problem-solving involved, and discuss how we support pupils to reach this standard in school. We'll also offer ideas for how you can help develop these skills at home.

**Greater Depth Writing in KS2 – Years 3 - 6**

**Monday 1<sup>st</sup> December**

**Timings 2:15 - 3:00**



Ever wondered what makes a piece of writing truly "greater depth"? In this session, we'll explore the expectations for children working at this level and share examples of exceptional writing. We'll also clear up common misconceptions — like the idea that greater depth simply means 'writing more'. Parents will see the kinds of skills we look for, including creativity, precision, and control of language, and leave with practical tips to help develop these skills at home.